



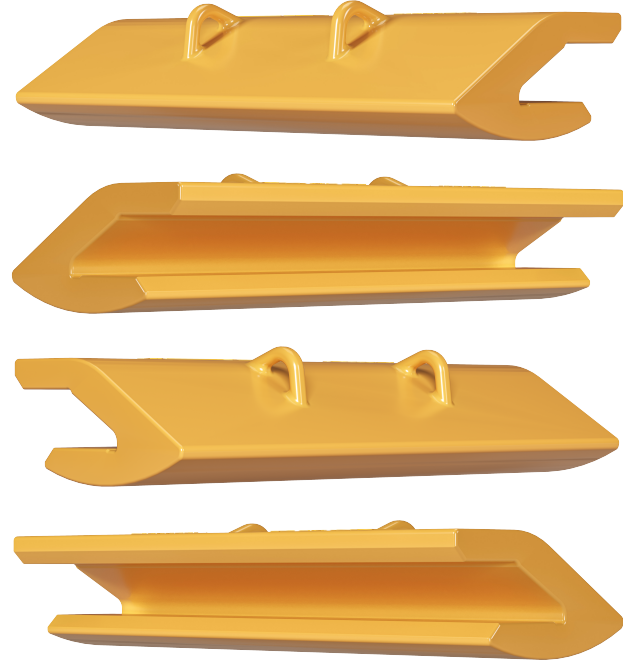
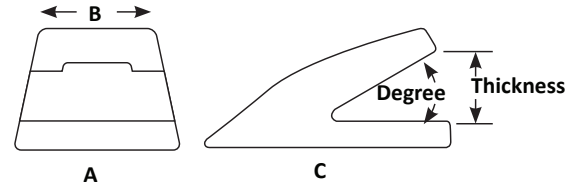
BLACK CAT

WEAR PARTS

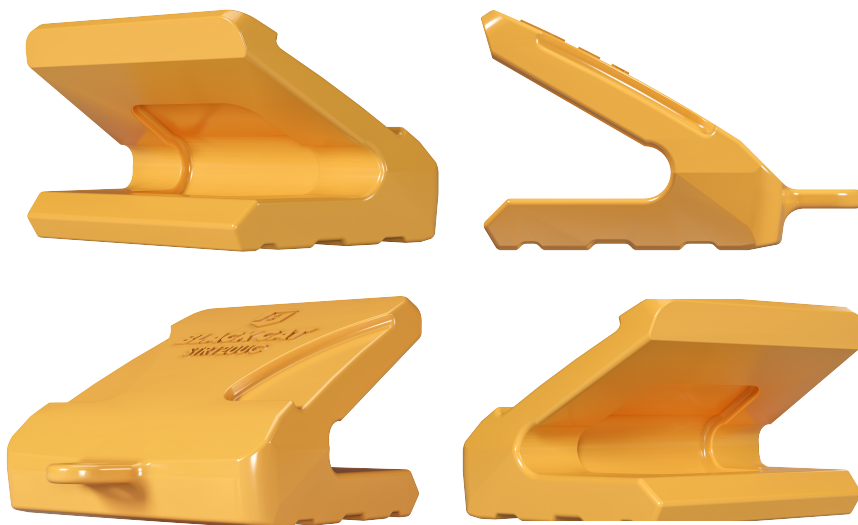
LIP, HEEL & CORNER PROTECTION

Weld On Lip Shrouds

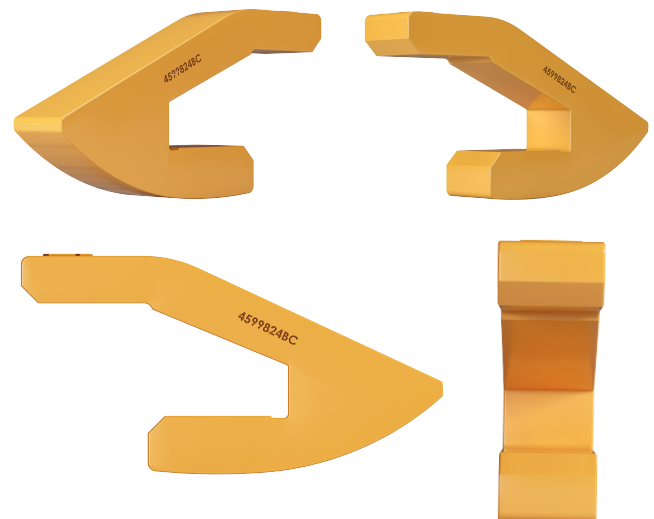
Part Number	Weight	Lip Thickness	Degree	A	B	C
4ML50UC	14.6 lb 6.6 kg	1.25" - 2.00" 32 mm - 51 mm	30°	5.59" 142 mm	5.15" 131 mm	8.12" 206 mm
10WS	19.6 lb 8.9 kg	1.50" 38 mm	30°	10.00" 254 mm	7.00" 178 mm	7.38" 187 mm
13WS	40.7 lb 18.5 kg	1.75" 44 mm	23°	13.00" 330 mm	10.00" 254 mm	10.25" 260 mm
WS25	4.0 lb 1.8 kg	1.75" 44 mm	22°	2.50" 64 mm	2.50" 64 mm	4.88" 124 mm
WS45	14.2 lb 6.4 kg	1.75" - 2.00" 44 mm - 51 mm	30°	4.50" 114 mm	4.50" 114 mm	7.17" 182 mm
WLS2003024	122.1 lb 55.4 kg	2.00" 51 mm	30°	24.00" 610 mm	24.00" 610 mm	9.18" 233 mm
WLS2503024	171.1 lb 77.6 kg	2.50" 64 mm	30°	24.00" 610 mm	24.00" 610 mm	11.33" 288 mm
WS80	33.4 lb 15.1 kg	2.50" - 3.00" 64 mm - 76 mm	30°	8.00" 203 mm	7.00" 178 mm	8.57" 218 mm
4ML70UC	45.3 lb 20.5 kg	2.50" - 3.00" 64 mm - 76 mm	30°	9.47" 241 mm	8.93" 227 mm	9.49" 241 mm
WLS3003024	202.6 lb 91.9 kg	3.00" 76 mm	30°	24.00" 610 mm	24.00" 610 mm	12.72" 323 mm
4599824BC	19.1 lb 8.7 kg	3.15" 80 mm	22°	2.28" 58 mm	2.28" 58 mm	12.17" 309 mm
WLS3503024	271.6 lb 123.2 kg	3.50" 89 mm	30°	24.00" 610 mm	24.00" 610 mm	14.74" 374 mm
WLS4003024	417.1 lb 189.2 kg	4.00" 102 mm	30°	24.00" 610 mm	24.00" 610 mm	17.46" 443 mm
STR120UC	85.2 lb 38.6 kg	4.00" - 4.75" 102 mm - 121 mm	30°	12.16" 309 mm	10.40" 264 mm	9.23" 234 mm
STR120LD	83.3 lb 37.8 kg	4.00" - 4.75" 102 mm - 121 mm	30°	11.90" 302 mm	9.50" 241 mm	9.14" 232 mm
STR120RD	83.9 lb 38.1 kg	4.00" - 4.75" 102 mm - 121 mm	30°	11.90" 302 mm	9.50" 241 mm	9.14" 232 mm



WLS2003024



STR120UC



4599824BC



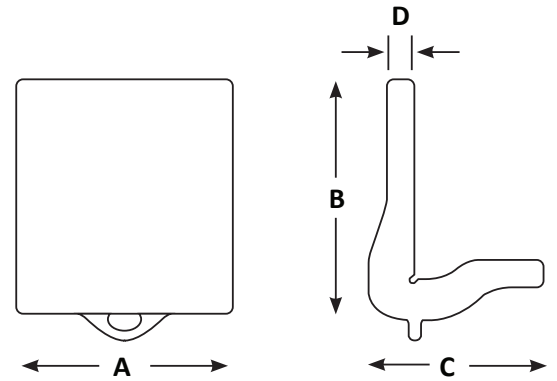
BLACK CAT

WEAR PARTS

LIP, HEEL & CORNER PROTECTION

Weld On Heel Shrouds

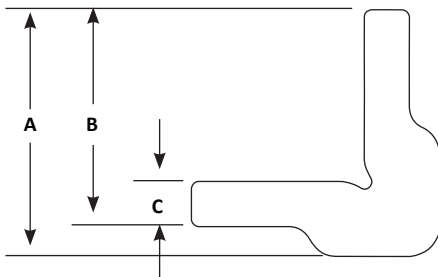
Part Number	Description	Weight	A	B	C	D
CG03	Straight	5.4 lb 2.4 kg	3.00" 76 mm	4.12" 105 mm	3.62" 92 mm	0.75" 19 mm
2804079	Curved	9.3 lb 4.2 kg	4.70" 119 mm	5.90" 150 mm	4.30" 109 mm	0.79" 20 mm
2804078	Straight	10.8 lb 4.9 kg	4.70" 119 mm	5.90" 150 mm	4.30" 109 mm	0.79" 20 mm
ES6697-4	Curved	22.4 lb 10.2 kg	7.49" 190 mm	7.00" 178 mm	4.00" 102 mm	1.24" 31 mm
1386551	Curved	26.9 lb 12.2 kg	6.88" 175 mm	8.13" 207 mm	5.88" 149 mm	1.00" 25 mm
ST002	Curved	29.2 lb 13.2 kg	11.75" 298 mm	4.00" 102 mm	4.00" 102 mm	1.00" 25 mm
1386529	Straight	29.6 lb 13.4 kg	6.88" 175 mm	8.13" 207 mm	5.88" 149 mm	1.00" 25 mm
ES6697-3	Curved	29.9 lb 13.6 kg	7.49" 190 mm	7.00" 178 mm	4.00" 102 mm	1.24" 31 mm
ST001	Straight	33.3 lb 15.1 kg	18.00" 457 mm	4.00" 102 mm	4.00" 102 mm	1.00" 25 mm
ES6697-2	Curved	45.3 lb 20.5 kg	7.50" 191 mm	10.00" 254 mm	6.00" 152 mm	2.00" 51 mm
1571027	Curved	59.3 lb 26.9 kg	9.81" 249 mm	10.63" 270 mm	7.88" 200 mm	1.19" 30 mm
1571019	Straight	65.1 lb 29.5 kg	9.81" 249 mm	10.63" 270 mm	7.88" 200 mm	1.19" 30 mm
ES6697-5	Curved	87.5 lb 39.7 kg	9.99" 254 mm	12.00" 305 mm	8.00" 203 mm	2.00" 51 mm
ES6697-7	Curved	189.5 lb 86.0 kg	9.84" 250 mm	13.70" 348 mm	9.88" 251 mm	3.94" 100 mm



ST001

Corner Protectors

Part Number	Description	Weight	Length	A	B	C
CG24-5	Round Edge	31.5 lb 14.3 kg	24.00" 610 mm	3.88" 99 mm	3.50" 89 mm	0.63" 16 mm
CG36-6	Square Edge	67.8 lb 30.8 kg	36.00" 914 mm	4.13" 105 mm	3.63" 92 mm	0.75" 19 mm



CG03



CG36-6



ES6697-4