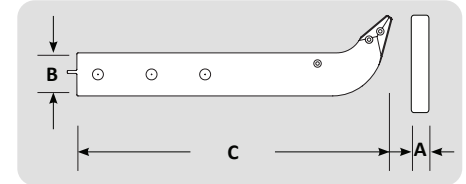




## DOZER RIPPER Teeth, Shanks & Protectors

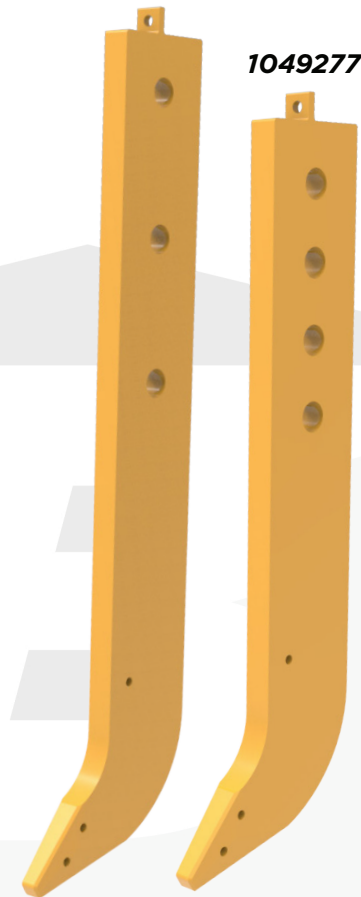
### Ripper Shanks

	Part #	Model	Tooth Size	Weight	A	B	C
Caterpillar®	9J6586	D4, D5	R300	53 lbs	2.25"	5.38"	21.35"
	RVR1380797	D5, D6, D7	RVR350	121 lbs	2.92"	10.46"	28.24"
	1380797 (9J3139)	D5, D6, D7	R350	123 lbs	2.92"	10.46"	28.40"
	9J8923	D5, D6, D7		162 lbs	3.00"	7.00"	26.79"
	9W7382	D5, D6, D7		336 lbs	3.00"	9.01"	48.70"
	8E5346	D8, D9	R450	649 lbs	3.00"	13.00"	63.39"
	8E5345	D8, D9		716 lbs	3.00"	13.00"	69.41"
	8E5342	D8, D9		771 lbs	3.00"	13.00"	75.20"
	8E5347	D8, D9		814 lbs	3.00"	13.00"	79.13"
	8E5339	D8, D9		953 lbs	3.00"	13.00"	91.73"
	8E5340	D8, D9		1,010 lbs	3.00"	13.00"	96.85"
	8E5348	D8, D9		1,140 lbs	3.00"	13.00"	108.66"
	8E8415	D9, D10	R500	943 lbs	3.54"	13.98"	71.61"
	8E8414	D9, D10		1,206 lbs	3.54"	13.98"	91.50"
	4Z8937	D9, D10		1,407 lbs	3.54"	13.98"	107.04"
	8E8416	D9, D10		1,481 lbs	3.54"	13.98"	111.81"
	8E8411	D10		1,392 lbs	3.54"	14.96"	98.82"
	8E8417	D10		1,680 lbs	3.54"	14.96"	117.99"
	8E8413	D10		1,290 lbs	3.94"	15.75"	77.83"
	RVR1182140	D10	RVR500	1,619 lbs	3.94"	15.75"	98.66"
1182140	D10	R500	1,641 lbs	3.94"	15.75"	98.82"	
1093135	D10		1,993 lbs	3.94"	15.75"	118.78"	
1049277	D11		R550	2,219 lbs	4.33"	17.72"	107.60"
1049275	D11	2,716 lbs		4.33"	17.72"	129.61"	
4Z9312	D11	4,028 lbs		4.33"	17.71"	190.03"	
Komatsu®	1757821615	D155	D155	819 lbs	3.54"	14.17"	62.99"
	1957841191	D355	D355	920 lbs	3.54"	14.17"	70.86"
	1957951151C	D375	R500	1,341 lbs	3.74"	15.74"	87.24"
	1957951151	D375	D375	1,258 lbs	3.74"	15.74"	87.24"
	1987921320C	D475	R550	2,253 lbs	4.53"	18.11"	105.51"
	1987921320	D475	D475	2,167 lbs	4.53"	18.11"	106.22"
John Deere®	JD T9J6586	655, 755	R300	53 lbs	2.35"	5.29"	20.75"
	JD T288231	605		72 lbs	2.25"	5.39"	21.61"
	JD T211749	450, 550, 650		79 lbs	2.25"	5.39"	24.39"
	JD T225261	700		149 lbs	2.25"	6.69"	37.09"
	JD T389752	750, 850	9J8920	229 lbs	2.50"	8.00"	41.50"
	JD T389750	750, 850		240 lbs	2.50"	8.00"	43.50"
	JD T329688	950		311 lbs	2.50"	8.98"	57.93"
	JD AT417920	1050	R450	670 lbs	3.00"	13.00"	65.12"
	JD AT417929	1050		824 lbs	3.00"	13.00"	80.05"

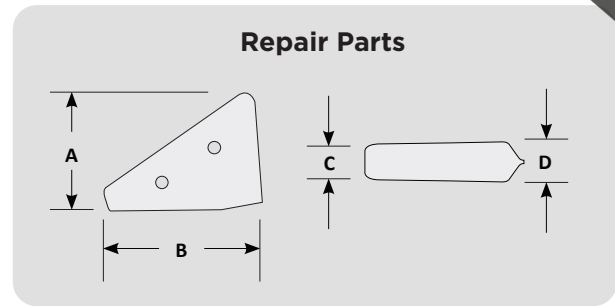
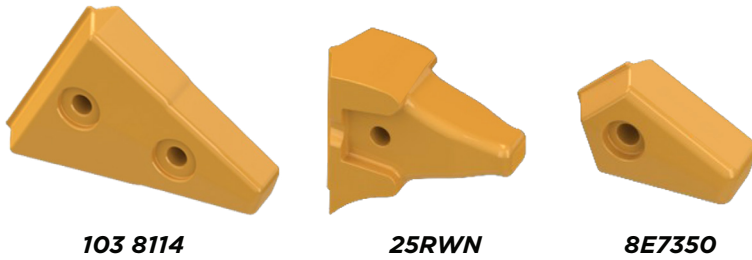


1049275

1049277

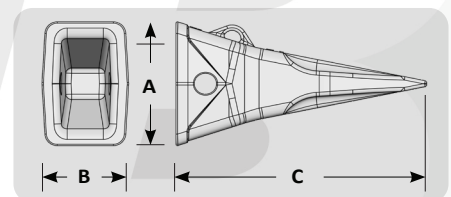
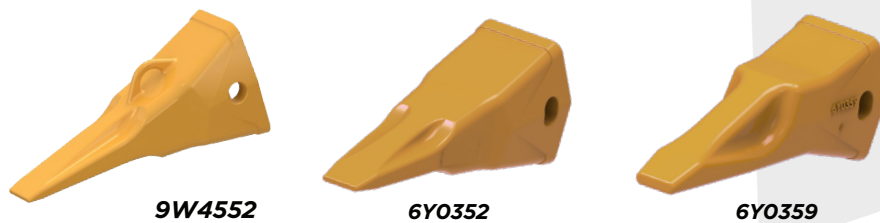


Black Cat Direct Replacement Ripper & Scarifier parts are manufactured using our HighSpec Alloy steel and heat treated to precise specifications. Computer design and analysis is employed in the development stages to ensure proper fitment and optimum strength for every part. Efficient processes and "state of the art" foundry practices allow for competitive pricing of quality parts. In house metallurgical staff and testing facilities ensure quality and consistency in all of our finished products. The results are quality wear parts that offer value to the customer every time.



### Ripper Repair Parts

Part #	Description	Model or Family	Weight	A	B	C	Holes
8E7300	R300 Nose	D4, D5	5.5 lbs	3.44"	5.31"	2.19"	1
8E7350	R350 Nose	D5, D6, D7	12.0 lbs	4.44"	6.63"	2.94"	1
RVR350NOSE	RVR350 Nose		16.5 lbs	6.10"	8.30"	2.92"	1
9U9694	R450 Nose	D8, D9	42.6 lbs	8.00"	12.25"	2.88"	2
R450QS	R450 Quarter Shank		152.7 lbs	20.79"	11.68"	3.00"	3
8E8418	R450 Quarter Shank		156.0 lbs	12.75"	17.42"	3.24"	3
R500WN100	R500 Nose	D9, D10, D11	46.9 lbs	9.88"	11.34"	3.94"	1
1038114	R500 Nose		95.1 lbs	10.56"	17.44"	3.94"	2
1073361	R500 Nose		91.5 lbs	11.06"	15.13"	3.94"	2
1038115	R500 Quarter Shank		153.6 lbs	12.61"	20.47"	3.94"	2
R500QS100	R500 Quarter Shank 100MM	D9, D10	361.1 lbs	28.07"	27.55"	3.93"	3
RVR500SEG	RVR500 Nose	D9, D10, D11	146.4 lbs	9.57"	21.49"	3.94"	2
1049279	R550 Quarter Shank	D11	275.6 lbs	16.26"	24.03"	4.38"	2
R550QS	R550 Quarter Shank	D11	659.8 lbs	38.03"	33.11"	4.33"	3
22RN	Esco® 22R Nose	-	12.9 lbs	5.79"	6.72"	3.06"	1
25RWN	Esco® 25R Nose	-	18.8 lbs	6.00"	7.44"	3.58"	1
35-5RWN	Esco® 35-5R Nose	-	44.4 lbs	8.63"	10.35"	4.78"	1
39-5RWN	Esco® 39-5R Nose	-	61.4 lbs	9.69"	3.14"	5.02"	1



### Ripper Teeth for Caterpillar® Applications

Part #	Description	Model or Family	Weight	A	B	C
6Y0309	R300 Penetration	D5	12.3 lbs	4.19"	3.31"	11.50"
6Y0359	R350 Penetration	D6, D7	28.0 lbs	5.81"	4.75"	14.13"
6Y0352	R350 Centerline		26.0 lbs	5.82"	4.73"	14.00"
9J8920	350 size vertical walled tooth	Old style	24.7 lbs	5.43"	4.28"	14.00"
4T5451	R450 Penetration - Short	D8, D9	36.0 lbs	6.83"	5.58"	12.86"
4T5452	R450 Penetration - Intermediate		41.0 lbs	6.81"	5.63"	15.63"
9W2451	R450 Centerline - Short		40.6 lbs	6.77"	5.63"	12.88"
9W2452	R450 Centerline - Intermediate		49.0 lbs	6.75"	5.63"	15.00"
1140453	R450 Centerline - Long		55.0 lbs	6.77"	5.63"	16.65"



## Ripper Teeth for Caterpillar® Applications (continuation)

Part #	Description	Model or Family	Weight	A	B	C
4T5501	R500 Penetration - Short	D10, D11	54.9 lbs	8.60"	6.16"	15.00"
4T5502	R500 Penetration - Intermediate		67.0 lbs	9.25"	6.50"	16.75"
4T5503	R500 Penetration - Long		67.0 lbs	9.25"	6.44"	18.50"
4T4501	R500 Centerline - Short		54.9 lbs	8.62"	6.17"	14.76"
4T4502	R500 Centerline - Intermediate		59.4 lbs	8.60"	6.16"	16.50"
8E8503	R500 Centerline - Long		75.0 lbs	9.24"	6.49"	19.00"
6Y3552	R550 Penetration - Intermediate	D11	103.0 lbs	10.93"	6.84"	21.25"
9W4551	R550 Centerline - Short		93.0 lbs	11.15"	7.36"	17.63"
9W4552	R550 Centerline - Intermediate		108.0 lbs	11.15"	7.36"	21.25"



**39-5R18B**

## Ripper Teeth for Esco® Applications

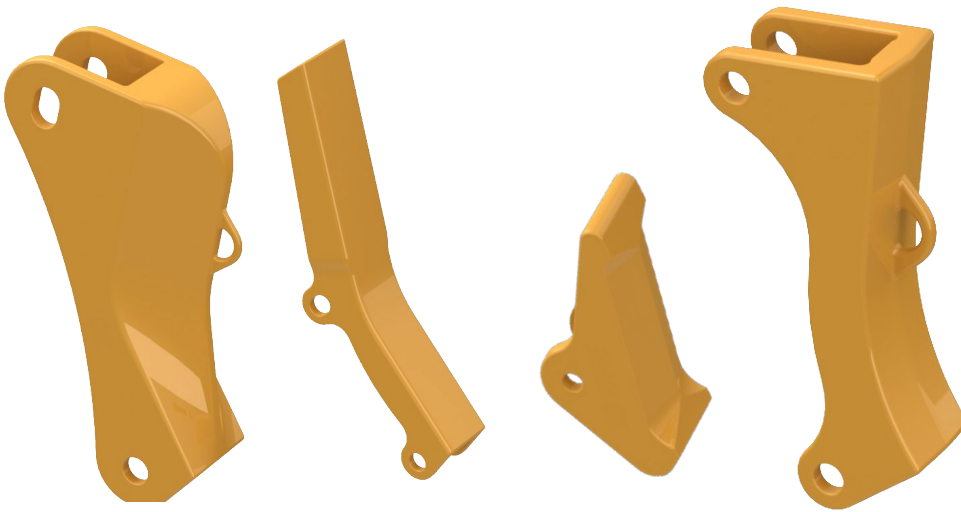
Part #	Description	Model or Family	Weight	A	B	C
22R10	Non-Centerline Rib	Esco® 22R	8.5 lbs	3.64"	3.35"	10.66"
25R12	Non-Centerline Rib	Esco® 25R	13.7 lbs	4.48"	3.83"	12.05"
35-R15	Non-Centerline	Esco® 35-5R	32.1 lbs	6.51"	4.92"	15.50"
39-5R18B	Non-Centerline Rib	Esco® 39-5R	48.8 lbs	7.53"	6.12"	18.12"



**198-78-21340**

## Ripper Teeth for Komatsu® Applications

Part #	Description	Model or Family	Weight	A	B	C
141-78-11253	Non-Centerline	D60, D61, D65, D75	25.8 lbs	6.41"	4.81"	11.00"
141-78-11253P	Penetration		32.4 lbs	6.44"	4.93"	14.00"
175-78-31230	Centerline	D85, D135, D150, D155	31.5 lbs	6.71"	4.75"	13.19"
175-78-31230P	Penetration		37.2 lbs	6.77"	4.81"	15.49"
195-78-21331	Centerline	D275, D355	35.7 lbs	7.71"	4.88"	14.50"
195-78-71320	Non-Centerline	D375	54.7 lbs	8.47"	5.12"	16.50"
195-78-71350	Centerline		56.4 lbs	8.14"	5.00"	18.50"
198-78-21340	Non-Centerline	D475	83.6 lbs	9.86"	6.08"	20.08"
198-78-21340P	Penetration		102.7 lbs	10.19"	6.46"	22.05"
198-78-21370	Centerline		79.5 lbs	9.45"	6.13"	17.50"
19M-78-11341	Centerline	D575	87.2 lbs	9.61"	7.74"	19.53"

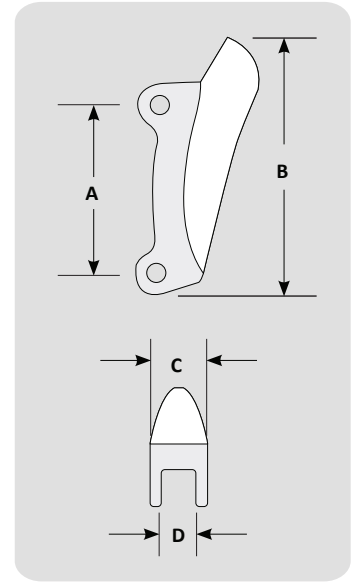


9N4621

132 4716

138 0796

195-78-71110



### Ripper Shank Protectors for Caterpillar® Applications

Part Number	Description	Model or Family	Weight	A	B	C	D
1380796	R350 1 Pin Standard Protector	D5, D6, D7	21.0 lbs	-	12.75"	4.30"	3.05"
6J8814	R450 2 Pin Standard Protector	D8/D9	27.0 lbs	12.25"	17.00"	4.25"	3.13"
6J8814EXT	R450 2 Pin Standard Protector - Extended		51.0 lbs	12.25"	23.00"	4.75"	3.13"
8E1848	R450 2 Pin Sharp Protector		56.0 lbs	12.25"	19.13"	5.00"	3.25"
1324716	R450 2 Pin Standard Protector - Extended		54.0 lbs	12.31"	27.11"	4.88"	3.19"
1U3644	R500 1 Pin Standard Protector	D9/D10	90.0 lbs	-	29.00"	5.25"	4.13"
9W8365	R500 2 Pin Standard Protector 90mm		85.0 lbs	16.00"	23.26"	5.75"	3.63"
9W8365EXT	R500 2 Pin Sharp Protector - Extended		101.0 lbs	16.00"	34.38"	5.75"	3.63"
6Y8960	R500 2 Pin Sharp Protector	D10/D11	40.0 lbs	15.62"	22.06"	5.50"	4.38"
1321015	R500 2 Pin Sharp Protector - Extended		185.0 lbs	15.62"	34.25"	6.50"	4.38"
9N4621	R550 2 Pin Sharp Protector	D11	157.0 lbs	23.24"	28.77"	6.31"	4.75"
1321016	R550 2 Pin Sharp Protector - Extended		241.0 lbs	23.16"	36.60"	7.19"	4.75"

### Ripper Shank Protectors for Komatsu® Applications

Part Number	Description	Model or Family	Weight	A	B	C	D
195-78-21320	2 Pin Standard Protector	D155, D275, D355	31.0 lbs	13.56"	16.56"	4.50"	3.13"
195-78-21580	2 Pin Standard Protector - Extended		50.0 lbs	13.56"	27.25"	4.50"	3.13"
195-78-71110	2 Pin Standard Protector	D375	69.0 lbs	18.38"	21.48"	5.20"	3.25"
195-78-72410	2 Pin Standard Protector - Extended		101.0 lbs	18.38"	33.72"	5.50"	3.25"
198-78-21330	2 Pin Standard Protector	D475	100.0 lbs	16.75"	21.53"	5.75"	4.20"
198-78-21390	2 Pin Standard Protector - Extended		140.0 lbs	16.75"	35.36"	5.75"	4.20"

www.blackcatwearparts.com sales@blackcatwearparts.com Toll Free: 1.800.661.6666 T: 780.465.6666 F: 780.465.9595

Black Cat Wear Parts Ltd. produces after market replacement products designed to work with specific third party wear part systems. Reference to Caterpillar, ESCO, Super V, SV2 and other third party trademarks referred to in this publication are for informational, comparative, and descriptive purposes only. Black Cat Wear Parts Ltd. does not claim any ownership in or license to use any third party trademarks referred to in this publication and is not affiliated with, nor does it make, use or sell any products manufactured by any owner of such trademarks.